

PRESSURE MEASURING FILM

FUJI PRESCALE FILM

[MONO-SHEET TYPE FOR SUPER HIGH PRESSURE]

1 KIND

Six kinds of Prescale are supplied to comply with demands to measure a wide pressure range. Please select appropriate kind for your measurement.

type	Film type	Pressure range[MPa]						Product size W(mm)×L(m)		
		0.2	0.50,6	2.5	10	50	130		300	
Two-sheet type	Ultra Super Low Pressure(LLW)	[0.2-0.50,6]								270×5
	Super Low Pressure(LLW)	[0.50,6-2.5]								270×6
	Low Pressure(LW)	[2.5-10]								270×12
	Medium Pressure(MW)	[10-50]								270×12
Mono-sheet type	Medium Pressure(MS)	[50-130]								270×12
	High Pressure(HS)	[130-300]								270×12
	Super High Pressure(HHS)	[300-300]								270×12

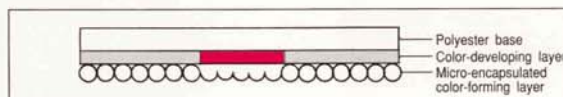
*With Super Low Pressure Film and the Prescale mat. measurements from 0.01~0.5MPa are possible.

**Film type W:Two-sheet
S:mono-sheet

2 STRUCTURE AND HOW IT WORKS

Structure

There are two types of Prescale; Two-sheet type and Mono-sheet type.
Mono-sheet type: The color developing material is coated on a PET base with the micro-encapsulated color-forming material layered on top.



How it works

When pressure is applied, the microcapsules are broken and the color-forming material reacts with the color-developing material to generate color. The microcapsules are designed to react according to the level of pressure and so the color density corresponds to the level of pressure.

3 PROPERTIES

Precision	±10% or less (measured by densitometer at 23°C/73.4°F, 65% RH)
Recommended temperature range	15°C~30°C(59°F~86°F)
Recommended humidity range	35%RH~70%RH

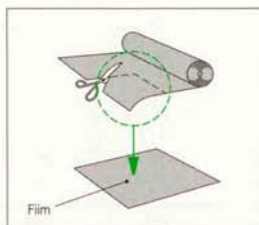
4 HOW TO USE

Mono-sheet type (Medium & High & Super High pressure: MS & HS & HHS)

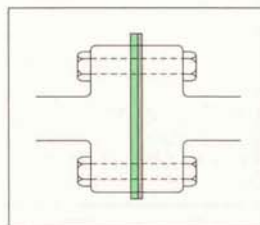
Cut Prescale in a black poly sack appropriately. Insert the Prescale where you want to measure pressure. Apply pressure. Take out the Prescale on which red patches have appeared. See and check the pressure distribution. To measure the Prescale, place it on a few sheets of white paper with its PET base (smooth surface) on top. For further precise pressure values, please use the pressure measurement and analyzing systems described below.

Pressure Measurement Systems: FPD-305E/306E/307E

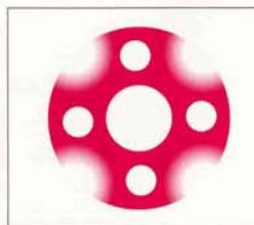
Pressure Imaging and Analyzing System: FPD-9210



(1) Cut the Prescale Film into the required shape.



(2) Insert cut Prescale Film into area to be measured and apply pressure.



(3) Remove film and observe pressure distribution.

MONO-SHEET TYPE FOR SUPER HIGH PRESSURE

STANDARD CONTINUOUS PRESSURE CHART

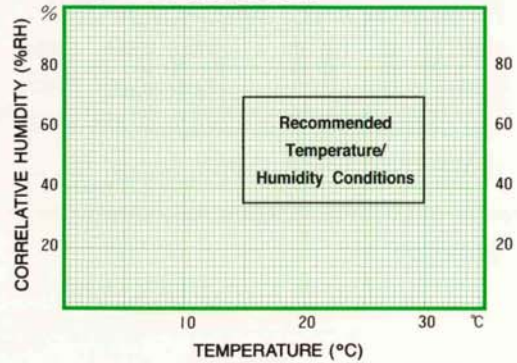
Measurement pressure range: 130–300MPa

• Pressure application conditions

Time to reach the pressure to be measured: 2 min.

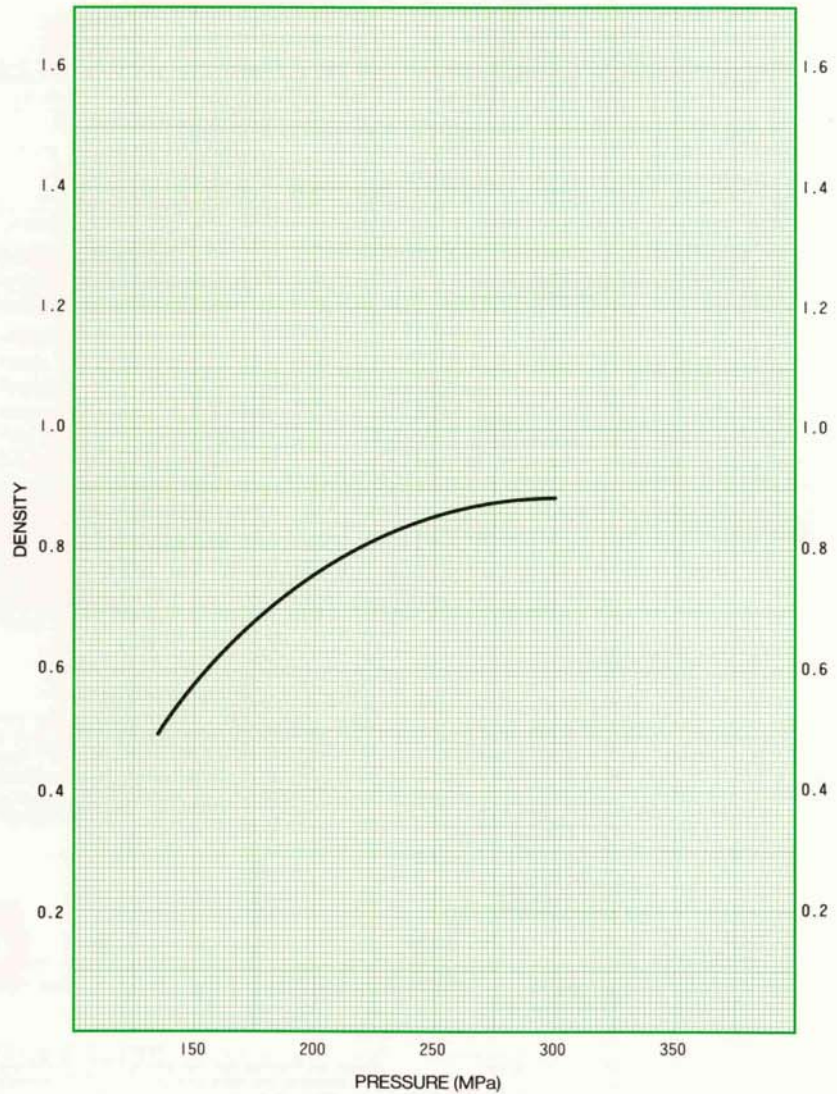
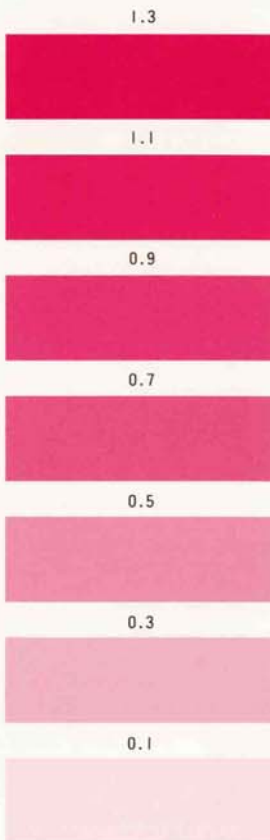
Time of retention at the pressure to be measured: 2 min.

GRAPH OF TEMPERATURE/HUMIDITY CONDITIONS



Check if the temperature and humidity meet with the conditions above when the pressure is applied.

STANDARD COLOR SAMPLE



5 PACKAGE AND NUANCE OF PRESCALE COLOR

(Package)

The product is supplied in the form of a roll. The film with the PET base outside is in a black poly sack. A water/oil proof-sheet(PET film: 270mmX12m) is contained inside of the core roll of film. Please use this protection sheet when you use Prescale in water or oil.

(Color nuance)

The nuance of Prescale color is as follows.

Mono-sheet type	film	Protection sheet
Medium Pressure(MS)	A little reddish	Colorless & transparent
High Pressure(HS)	Whity	Colorless & transparent
Super High Pressure(HHS)	◇	◇

6 STANDARD CONDITIONS FOR APPLYING PRESSURE

(Continuous Pressure)

Gradually increase the pressure to the required level in two minutes and maintain the pressure for another two minutes. The pressure maintained at this level is referred to as continuous pressure.

(Momentary Pressure)

Not supported

7 HOW TO DETERMINE THE PRESSURE LEVEL

Pressure distribution check by Prescale alone

When pressure is applied, red patches appear on Prescale. The red color density of Prescale changes depending on the amount of pressure applied. The area with deep red color indicates that the pressure applied was high and conversely the area with light red color indicates that the pressure applied was low. Place the Prescale on a few white sheets of paper with its PET base (smooth surface) on top and check the result in the light.

Pressure values determination by using the pressure chart

In order to roughly determine the pressure values, use the Prescale standard color sample and the pressure chart. Taking the temperature, the humidity and the pressure condition into consideration, you can determine the pressure values to a certain extent by selecting a pressure curve from the standard pressure chart. Place the Prescale on a few white sheets of paper with its PET base (smooth surface) on top and check the result in the light.

PRECAUTIONS ON USE

- 1) Mono-sheet type is self-color-developing, so be careful to handle it.
- 2) Clean the measuring place beforehand. Water, oil dust if present on the surface of Prescale, will hinder proper color density development.
- 3) Use the Prescale at temperature 15°C~30°C (59°F~86°F) and humidity 35%RH~70%RH. The result of measurement may not be accurate outside of this region.
- 4) Prescale is not reusable.
- 5) Use Prescale within the given shelf life.

PRECAUTIONS ON STORAGE

- 1) Be careful not to apply pressure on Prescale so that color patches won't appear on it.
- 2) Keep Prescale from the direct sunlight and heat.
- 3) Don't contact Prescale with the following items:
 - Diazo copying papers and carbon papers
 - Water, oil, solvent and other chemicals
 - Vinyl products and adhesive tapes
 - Rubber products
 - Papers written by marker pens
- 4) Keep unused Prescale in the black poly sack and store it in a box.
- 5) Keep used Prescale in a paper bag.
- 6) Avoid having rough surfaces of used Prescale face each other.

FUJIFILM

Fujifilm Europe GmbH | Medical Systems Division | Heesenstr. 31 | 40549 Düsseldorf
Tel.: +49 211 5089-515 | prescale@fujifilm.de | www.prescale.de | www.prescale.eu

TIEDEMANN